

CERTIFICATE OF LOCATION OF GOVERNMENT CORNER

NORTHEAST Corner of Section 11, Township 105 N., Range 42 W., 5th P.M.

STATE OF MINNESOTA, County of MURRAY

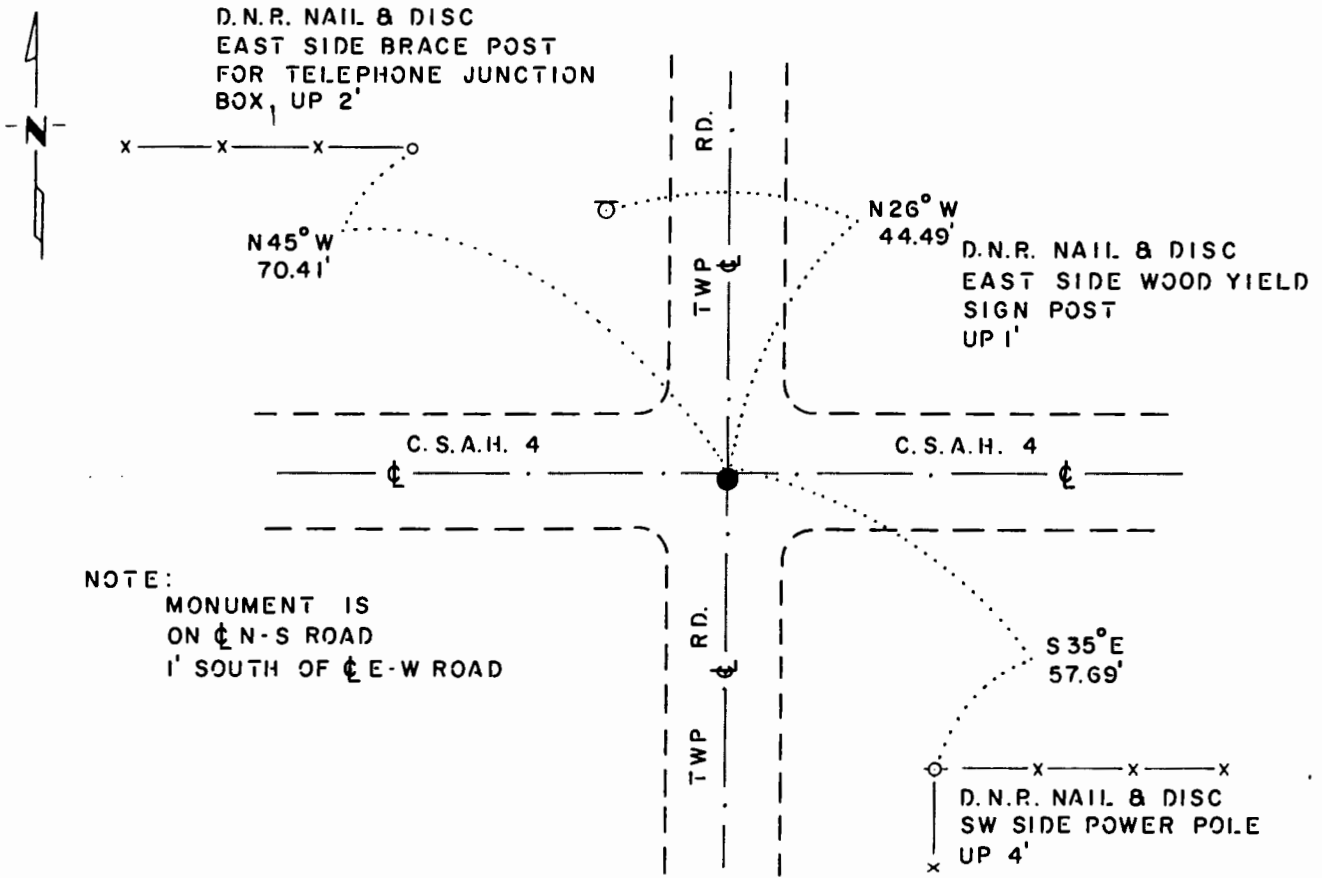
At the corner location shown on the sketch:

On 3-26-84 found a 1/2" IRON ROD, FLUSH
DATE

left monument as found, lowered monument, removed monument (explain)

On _____ placed a _____
DATE

SKETCH OF REFERENCE TIES



NOTE:
MONUMENT IS
ON ϕ N-S ROAD
1' SOUTH OF ϕ E-W ROAD

BEARINGS OBSERVED WITH COMPASS

Statement of evidence relative to this corner location is on back of page.

J. B. M. 5-14-84
G-1168

I hereby certify that this document and the data contained herein was prepared by me or under my direct supervision.

Bert R. Eveland 10-5-84
SIGNATURE DATE

Registration No. 10516

- Land Surveyor, Professional Engineer
 County Surveyor, County Engineer

OFFICE OF THE COUNTY RECORDER

County of Murray

I hereby certify that this document was filed in the Co. Recorders office at 10 A.M. on the 11th day of October A.D., 19 84

County Recorder Kevin J. Ohme

By _____, Deputy

DOCUMENT NO. 170425

Northeast Corner Section 11, Township 105 North, Range 42 West

This corner was originally established by the U. S. General Land Office survey in 1861. The government notes show corner marked with a wood post set in mound of earth with pits and trench dug around the mound.

On March 21, 1984, the DNR Bureau of Engineering contacted the Murray County Offices of the Recorder and Highway Engineer for corner information.

The following information was obtained from the County Recorder's Office:
Surveyor's Record Book A, Page 72, contains a survey done by J. W. Woolstencroft, dated May 11, 1898. Corner is shown as government mound and pits.

Surveyor's Record Book A, Page 182, contains a survey done by J. W. Woolstencroft, dated November 8, 1902. Corner is shown as government mound and pits and stake.

Surveyor's Record Book A, Page 182, also shows that a stone was set at corner by measurement after a former survey, date and surveyor not indicated. The following ties are shown to stone:
fence corner, northeast, 36 feet 4 inches
fence corner, southeast, 44 feet 3 inches

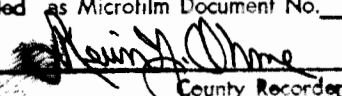
The following information was obtained from the County Highway Engineer's Office:

In 1977, the County Engineer's Office dug for this corner with a backhoe and found a concrete monument and took the following ties:
nail and cap - power pole, southeast, 57.23 feet
nail and cap - yield sign, northwest, 44.19 feet
nail and cap - T.C.T., northwest, 70.27 feet

In March 1984, the DNR Bureau of Engineering traversed to the area of the corner and found a ½ inch iron rod. Searched for and found the county ties but no nail and caps.

The DNR Bureau of Engineering accepts the iron rod as the location of the original government corner.

Traverse information is available from the DNR Bureau of Engineering.

State of Minnesota, } ss. **170425**
County of Murray, }
I hereby certify that the within instrument
was filed in this office for record on the
11th day of October A.D. 19 84
at 10:00 o'clock A. M., and was duly re-
corded as Microfilm Document No. 170425

County Recorder